

NVY 500

Hot water mobile pressure washers for Industrial Use.

Increased Productivity: The ultra-high-pressure hot water jet removes stubborn dirt, encrustations, and oily or greasy stains.

The combination of 500-bar pressure and the degreasing action of hot water dissolves dirt more quickly, optimizing work time and reducing the consumption of chemical products.



**POWERFUL, ERGONOMIC
EASY TO HANDLE**



Robust, impact-resistant, and compact: • Structure composed of a tubular frame and a thick platform, mounted on 2 fixed wheels and 2 swivel wheels for excellent maneuverability • Thick stainless steel front and top covers, removable for efficient and immediate maintenance • In-line pump with 3 ceramic pistons • High-performance 1450 rpm electric motor • Pump-motor coupling with double flange and elastic joint • Regulation valve • Safety valve • Highly robust and large-capacity integrated rotationally molded

tanks • Anti-limescale product dosing pump controlled by the electronic board • Water filter • Fuel filtration system with three filters.

Simple and intuitive 24V control panel, complete with: • Pump on/off switch • Boiler on/off switch • Voltage indicator • Pump operation indicator light • Boiler operation indicator light • Diesel shortage warning light • Anti-limescale product shortage warning light • Thermostat • Stainless steel pressure gauge with 0-1000 bar scale.

Intelligent timed total stop: Motor stops after 15 seconds when the trigger gun is closed • Total shutdown after 10 seconds of operation without water • Total shutdown after detecting 10 micro-leaks • Safety system that disables all functions if the motor is not started within 60 minutes; • Protection against automatic restart after a blackout.



500 BAR MOBILE HOT WATER PRESSURE WASHER WITH 21 LITER ROTOFORMED WATER TANK

NVY is designed with a large capacity water tank (21L) which, thanks to its vertical shape, allows perfect feeding of the pump, which always receives water under pressure and without air bubbles. Such a structure allows it to occupy little floor space and gives great maneuverability and practicality of use.

The ultra-high performance electric motor stabilizes the working temperature at constant values for uninterrupted use.

The 3-piston ceramic in-line pump with connecting

rod operation offers very high performance. The connection with the motor is made by elastic coupling to ensure a longer service life.



HIGH EFFICIENCY BOILER UNIT with emissions between 0 and 1 on the Bacharach scale.

Efficiency: 91%

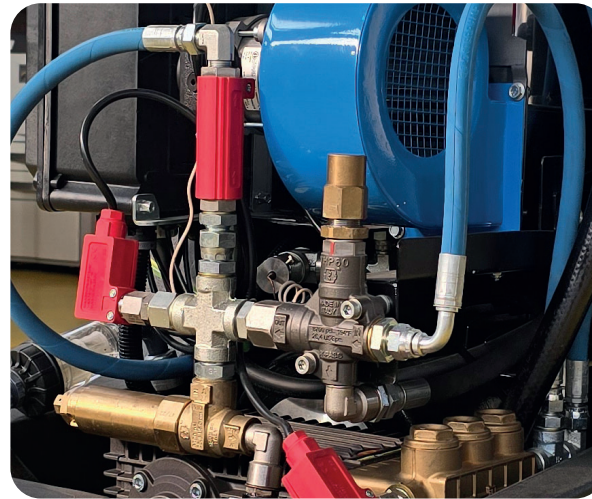
The boiler bottom, made of high-strength refractory cement made on site, does not

allow the absorption of diesel oil or water making it very durable over time.

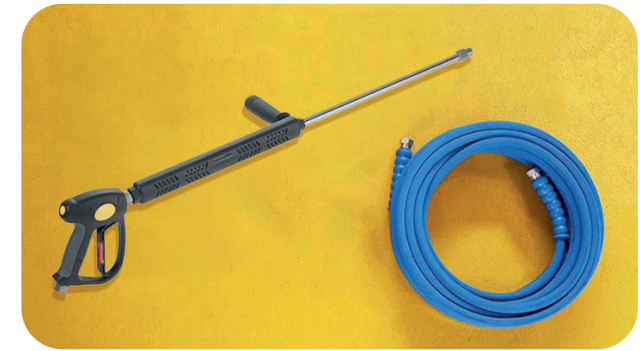
The 36m coil is made of ø 17mm pipe. The fan is made of painted steel, resistant to vibration over time.

Combustion safety is ensured by a multiple system: in fact, the burner start and stop functions are regulated both by sensing water flow and pressure. If one of the devices fails, signaling lack of flow or pressure, combustion is stopped or burner ignition is

| | PRESSURE | DELIVERY | FEED | MOTOR POWER | POWER SUPPLY | TEMP. | DIMENSIONS |
|----------------|----------|----------|--------------|-------------|--------------|----------|-------------|
| | bar | L/min | ph - V - Hz | HP | kW | °C | cm |
| NVY 500 | 500 | 15 | 3 - 400 - 50 | 20 | 18 | 30 - 140 | 114x62x123h |



not allowed. This system ensures that combustion is stopped even if water is no longer circulating in the coil, preventing the risk of overheating.



STANDARD ACCESSORIES

- Blue, non-staining high-pressure hose, length 15m.
- Spraygun.
- Lance with handle.
- High-pressure nozzle.

ACCESSORIES ON DEMAND

- High-pressure hoses of greater length.
- Lance with shoulder rest
- Rotating nozzle.
- Chimney extension.
- Remote control.

PERFORMANCE AND SAVINGS

The combination of very high efficiency, a generously sized coil and a very low fume outlet temperature, allows the use of diesel nozzles with minimal flow rates while still easily reaching set temperatures. Ignition times are therefore greatly reduced resulting in lower fuel consumption and significant cost savings.



APPLICATIONS

The high-pressure jet at 500 bar ensures an extremely effective mechanical action, enhanced by the power of hot water: the heat expands encrustations, weakening them and facilitating their rapid detachment from surfaces. NVY 500 finds its optimal application in the pro-

duction of reinforced concrete structures; in cleaning formworks previously coated with oily materials for concrete manufacturing; in cleaning vehicles used for transporting bituminous substances; in washing hulls to remove barnacles; and in the asphalt machinery sector.

